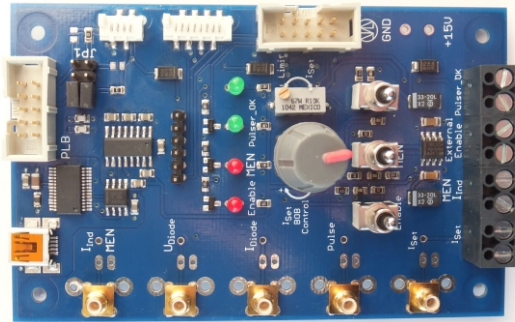


## LDP-C BOB V3.1

Break out Board for LDP-C/ -CW/ -QCW Series



- Compatible with all LDP-C/ -CW/ -QCW drivers
- Easy access to all monitor signals
- Connector for trigger input
- Status LEDs
- Current setpoint poti
- Enable switch

### Product Description

The LDP-C BOB provides an easy access to all control signals of the LDP-C/ -CW/ -QCW series. Laser diode current, laser diode voltage as well as inductor current monitor signals are lead to SMC jacks for easy connection of an oscilloscope. A SMC connector for the trigger input is also available. The enable signal is connected to a switch to activate the driver easily. By using the poti the current setpoint can be configured very quickly. Two LEDs indicate the status of the driver.

The BOB is powered by the driver. Thus, no additional power supply is required.

### Technical Data\*

Supply voltage	None (supplied through the driver)
Dimensions in mm	67 x 100 x 32
Weight	54 g
Operating temperature	-20 to +55 °C

\* Technical data is subject to change without further notice.

**Compatible Products:** LDP-C Series  
LDP-CW Series  
LDP-QCW Series

